



These instructions include border and repeat pattern. The repeat pattern can be seen clearly as the white area with a red border on the graph. Stitch count is multiples of 8 + 3 (pattern) + 6 (border) stitches and the repeat pattern is over 12 rows (Rows 5 - 16 inclusive). The finished square is 49 stitches by 78 rows.

8 ply yarn (approx. 35g), size 4mm needles, Finished size approx. 10" (25.5cm) square.

Tension: 5sts = 1" (2.5cm) – over stocking stitch

Note: If your tension is different – try changing to 4.5mm needles to increase the size or introduce an additional pattern repeat.

Instructions for Graph:

- Each square on the graph represents a stitch.
- The exact repeat pattern is outlined by a heavy red coloured border.
- Light grey shading indicates part-pattern stitches/rows.
- Dark grey shading indicates all the borders.
- The entirety of the graph represents the knitting pattern (**minus repeats**) and includes borders.

Direction:

- The graph is to be read from the bottom up.
- All odd numbered rows mean right side of work faces knitter. Read graph from right to left.
- All even numbered rows mean wrong side of work faces knitter. Read graph from left to right.
- Your first stitch is at the bottom right-hand corner of the graph (Row 1, Stitch 1).

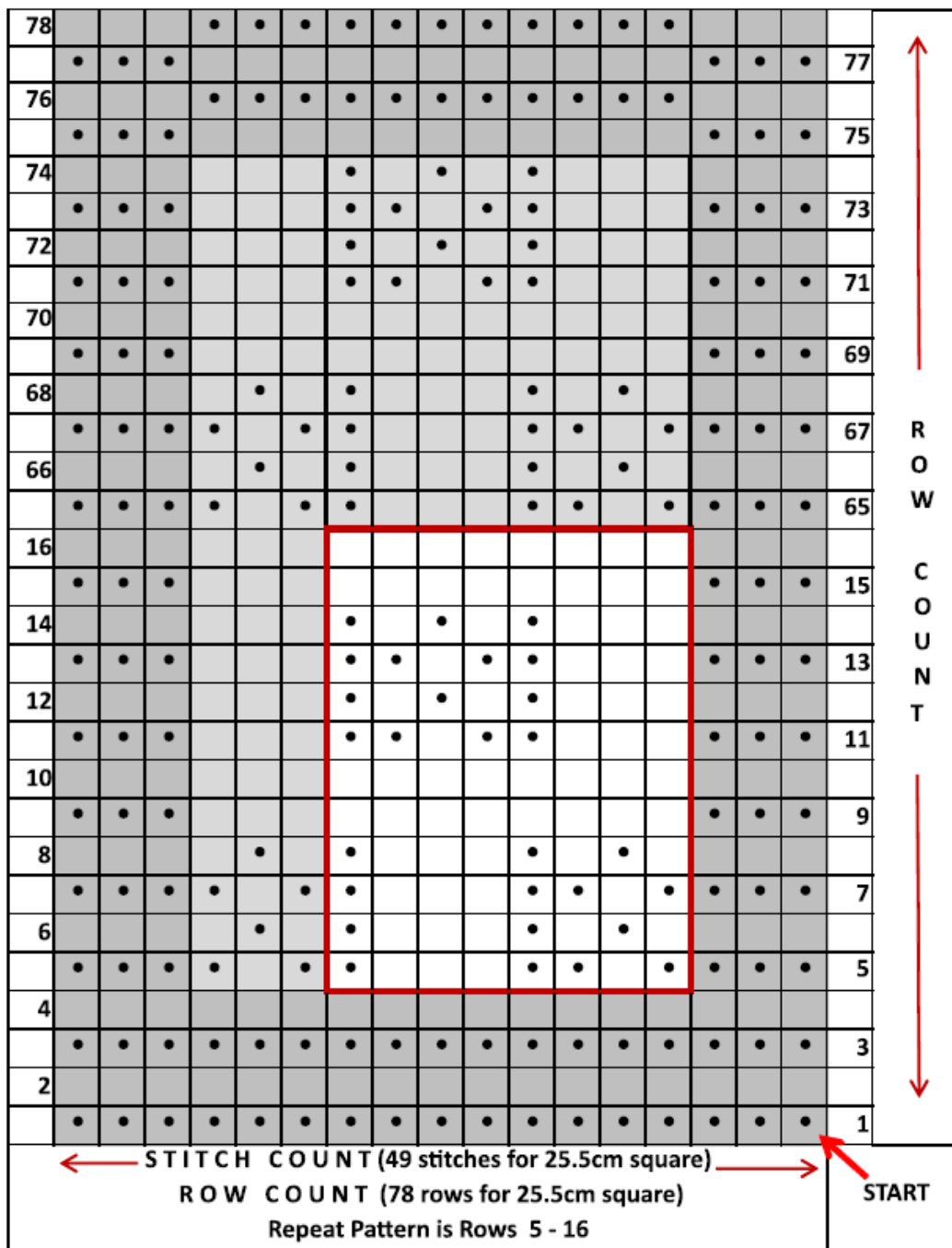
Stitch Symbols:

To visualise the overall pattern design on the graph please note that the:

- knit stitch is a blank box on odd rows and a black dot on even rows, while the
- purl stitch is a black dot on odd rows and a blank box on even rows.

GRAPH INSTRUCTIONS – Straight Moss Stripe

Cast on **49 stitches** ($8 \times 5 = 40 + 3 + 6 = 49$). The area outlined by a heavy red border represents the repeat pattern. Light grey shading indicates part-pattern stitches/rows. The 10" (25.5cm) square is 5 patterns wide and 5 patterns high plus part-patterns left side and top - it also includes borders. Cast off row is in **PURL** stitch.



ODD Row – Right Side Facing	Knit	<input type="checkbox"/>	Purl	<input checked="" type="checkbox"/>
EVEN Row – Wrong Side Facing	Knit	<input checked="" type="checkbox"/>	Purl	<input type="checkbox"/>

See Page 3 for Written Instructions (no graph needed)

Straight Moss Stripe

The 10" (25.5cm) square is 5 patterns wide and 5 patterns high plus part-patterns left side and top and borders. Cast off row is in **PURL** stitch.

Cast on 49 stitches.

Rows 1 – 4 Purl all stitches

Row 5 P3, *P1, K1, P2, K3, P1 ; repeat from * four times, P1, K1, P1, P3

Row 6 P4, K1, P1, *K1, P3, (K1, P1) twice ; repeat from * four times, P3

Row 7 P3, *P1, K1, P2, K3, P1 ; repeat from * four times, P1, K1, P4

Row 8 P4, K1, P1, *K1, P3, (K1, P1) twice ; repeat from * four times, P3

Row 9 P3, Knit to last 3 stitches, P3

Row 10 Purl all stitches

Row 11 P3, *K3, P2, K1, P2 ; repeat from * four times, K3, P3

Row 12 P6, *(K1, P1) twice, K1, P3 repeat from * four times, P3

Row 13 P3, *K3, P2, K1, P2 ; repeat from * four times, K3, P3

Row 14 P6, *(K1, P1) twice, K1, P3 repeat from * four times, P3

Row 15 P3, Knit to last 3 stitches, P3

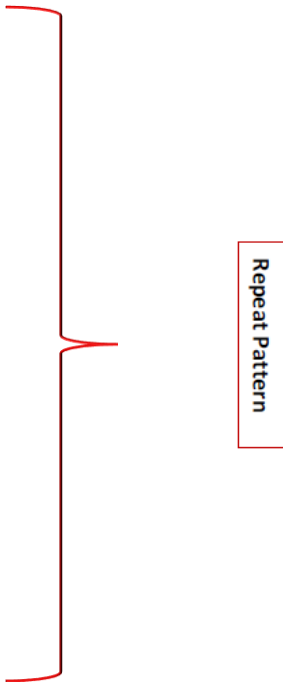
Row 16 Purl all stitches

Rows 17 – 64 Repeat Rows 5 – 16 **FOUR** times (48 rows)

Rows 65 - 74 Knit Rows 5 – 14 **ONCE** (10 rows)

Rows 75 - 78 Purl all stitches (4 rows)

Cast off in **PURL** stitch



Repeat Pattern