



These instructions include border and repeat pattern. The repeat pattern can be seen clearly as the white area with a red border on the graph. Stitch count is multiples of 16 + 1 (pattern) + 10 (part-pattern) + 6 (border) stitches and the repeat pattern is over 32 + 2 rows. The whole square is 78 rows.

8 ply yarn, size 4mm needles, Finished size approx. 10" (25.5cm) square.

Tension: 5sts = 1" (2.5cm) – over stocking stitch

Note: If your tension is different – try changing to 4.5mm needles to increase the size or introduce an additional pattern repeat.

Instructions for Graphs

- Each square on the graph represents a stitch.
- The exact repeat pattern is outlined by a heavy coloured border.
- Grey shading indicates stitches/rows outside the repeat pattern.
- The entirety of the graph represents the knitting pattern including borders.

The size of your work depends on how many repeats you create.

Direction:

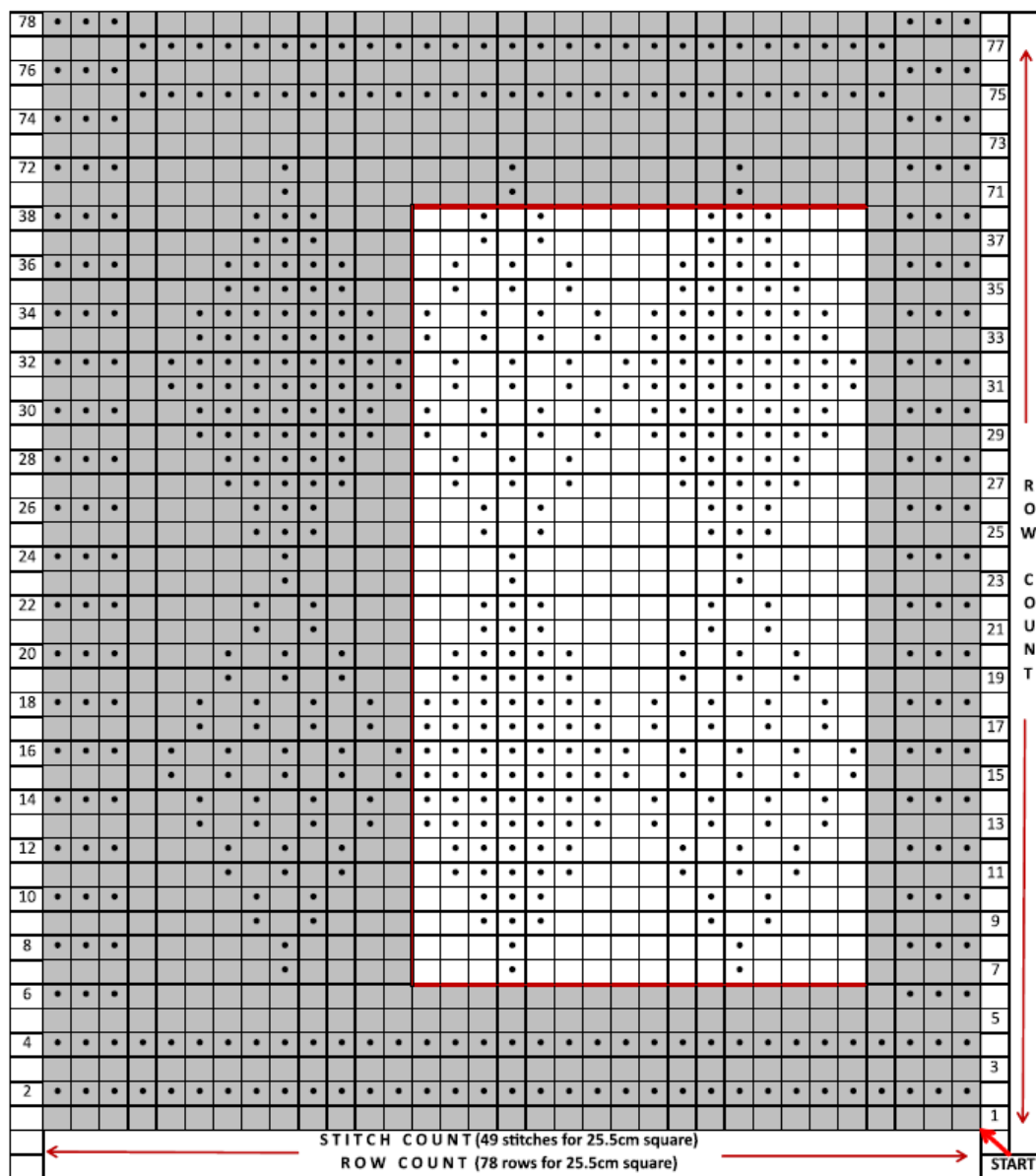
- The graph is to be read from the bottom up.
- All odd numbered rows mean right side of work faces knitter. **Read graph from right to left.**
- All even numbered rows mean wrong side of work faces knitter. **Read graph from left to right.**
- Your first stitch is at the bottom right-hand corner of the graph (Row 1, Stitch 1).

DIAMONDS

Stitch Symbols:

To visualise the overall pattern design on the graph please note that the knit stitch is a blank box on **odd** rows and a black dot on **even** rows, while the purl stitch is a black dot on **odd** rows and a blank box on **even** rows.

Cast on **49 stitches** ($16 \times 2 = 32 + 11 + 6 = 49$). The square will be 2 full pattern repeats wide and 2 pattern repeats high, plus part pattern and borders. Cast off row is in KNIT stitch.



ODD Row – Right Side Facing	Knit	□	Purl	•
EVEN Row – Wrong Side Facing	Knit	•	Purl	□

See Page 3 for Written Instructions (no graph needed)

Cast on 49 stitches.

Rows 1 – 5 Knit all stitches

Row 6 K3, Purl to last 3sts, K3

Row 7 (right side) K4, *K4, P1, K7, P1, K3 ; repeat from * once, K4, P1, K8

Row 8 K3, P5, K1, P4, *P3, K1, P7, K1, P4 ; repeat from * once, P1, K3

Row 9 K4, *K3, P1, K1, P1, K5, P3, K2 ; repeat from * once, K3, P1, K1, P1, K7

Row 10 K3, P4, K1, P1, K1, P3, *P2, K3, P5, K1, P1, K1, P3 ; repeat from * once, P1, K3

Row 11 K4, *K2, (P1, K1) twice, P1, K3, P5, K1 ; repeat from * once, K2, (P1, K1) twice, P1, K6

Row 12 K3, P3, (K1, P1) twice, K1, P2, *P1, K5, P3, (K1, P1) twice, K1, P2, repeat from * once, P1, K3

Row 13 K4, *K1, (P1, K1) 4 times, P7 ; repeat from * once, (K1, P1) 4 times, K5

Row 14 K3, P2, (K1, P1) 4 times, *K7, (P1, K1) 4 times, P1 ; repeat from * once, P1, K3

Row 15 K4, *(P1, K1) 4 times, P8 repeat from * once, (P1, K1) 5 times, K3

Row 16 K3, (P1, K1) 5 times, *K8, (P1, K1) 4 times ; repeat from * once, P1, K3

Row 17 K4, *K1, (P1, K1) 4 times, P7 ; repeat from * once, (K1, P1) 4 times, K5

Row 18 K3, P2, (K1, P1) 4 times, *K7, (P1, K1) 4 times, P1 ; repeat from * once, P1, K3

Row 19 K4, *K2, (P1, K1) twice, P1, K3, P5, K1 ; repeat from * once, K2, (P1, K1) twice, P1, K6

Row 20 K3, P3, (K1, P1) twice, K1, P2, *P1, K5, P3, (K1, P1) twice, K1, P2, repeat from * once, P1, K3

Row 21 K4, *K3, P1, K1, P1, K5, P3, K2 ; repeat from * once, K3, P1, K1, P1, K7

Row 22 K3, P4, K1, P1, K1, P3, *P2, K3, P5, K1, P1, K1, P3 ; repeat from * once, P1, K3

Row 23 K4, *K4, P1, K7, P1, K3 ; repeat from * once, K4, P1, K8

Row 24 K3, P5, K1, P4, *P3, K1, P7, K1, P4 ; repeat from * once, P1, K3

Row 25 K4, *K3, P3, K5, P1, K1, P1, K2 ; repeat from * once, K3, P3, K7

Row 26 K3, P4, K3, P3, *P2, K1, P1, K1, P5, K3, P3 ; repeat from * once, P1, K3

Row 27 K4, *K2, P5, K3, (P1, K1) 3 times ; repeat from * once, K2, P5, K6

Row 28 K3, P3, K5, P2, *(P1, K1) 3 times, P3, K5, P2 ; repeat from * once, P1, K3

Row 29 K4, *K1, P7, (K1, P1) 4 times ; repeat from * once, K1, P7, K5

Row 30 K3, P2, K7, P1 * (K1, P1) 4 times ; K7, P1 ; repeat from * once, P1, K3

Row 31 K4, *P9, (K1, P1) 3 times, K1 ; repeat from * once, P9, K4

Row 32 K3, P1, K9, *(P1, K1) 3 times, P1, K9 ; repeat from * once, P1, K3

Row 33 K4, *K1, P7, (K1, P1) 4 times ; repeat from * once, K1, P7, K5

Row 34 K3, P2, K7, P1 * (K1, P1) 4 times ; K7, P1 ; repeat from * once, P1, K3

Row 35 K4, *K2, P5, K3, (P1, K1) 3 times ; repeat from * once, K2, P5, K6

Row 36 K3, P3, K5, P2, *(P1, K1) 3 times, P3, K5, P2 ; repeat from * once, P1, K3

Row 37 K4, *K3, P3, K5, P1, K1, P1, K2 ; repeat from * once, K3, P3, K7

Row 38 K3, P4, K3, P3, *P2, K1, P1, K1, P5, K3, P3 ; repeat from * once, P1, K3

Rows 39 – 70 Repeat Rows 7 – 38 once

Row 71 K4, *K4, P1, K7, P1, K3 ; repeat from * once, K4, P1, K8

Row 72 K3, P5, K1, P4, *P3, K1, P7, K1, P4 ; repeat from * once, P1, K3

Row 73 Knit all stitches

Row 74 - 78 Knit all stitches

Cast off in **KNIT**