



These instructions include border and repeat pattern. The repeat pattern can be seen clearly as the white area with a red border on the graph. Stitch count is multiples of 14 + 1 (pattern) + 6 (border) stitches and the repeat pattern is over 28 rows (Rows 11 – 38 inclusive). The finished square is 49 stitches by 78 rows.

8 ply yarn, size 4mm needles, Finished size approx. 10" (25.5cm) square.

Tension: 5sts = 1" (2.5cm) – over stocking stitch

Note: If your tension is different – try changing to 4.5mm needles to increase the size or introduce an additional pattern repeat.

Instructions for Graphs

- Each square on the graph represents a stitch.
- The exact repeat pattern is outlined by a heavy red coloured border.
- Light grey shading indicates part-pattern stitches/rows outside the repeat pattern.
- Dark grey shading indicates the all borders.
- The entirety of the graph represents the knitting pattern including borders. **The size of your work depends on how many repeats you create.**

Direction:

- The graph is to be read from the bottom up.
- All odd numbered rows mean right side of work faces knitter. **Read graph from right to left.**
- All even numbered rows mean wrong side of work faces knitter. **Read graph from left to right.**
- Your first stitch is at the bottom right-hand corner of the graph (Row 1, Stitch 1).

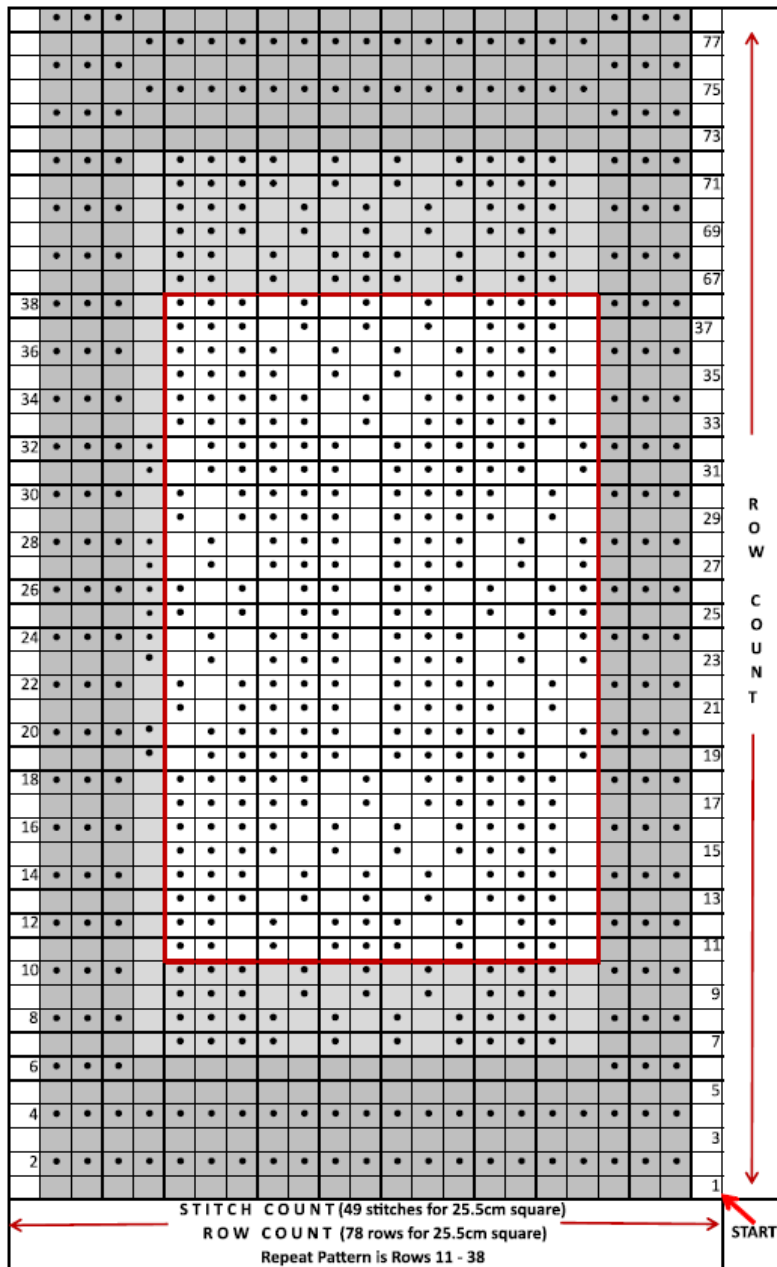
DIAMOND DROPS

Stitch Symbols:

To visualise the overall pattern design on the graph please note that the;

- knit stitch is a blank box on **odd** rows and a black dot on **even** rows, while the
- purl stitch is a black dot on **odd** rows and a blank box on **even** rows.

Cast on **49 stitches** ($14 \times 3 = 42 + 1 + 6 = 49$). The area outlined by a heavy red border represents the repeat pattern. The 10" (25.5cm) square is 3 repeat patterns wide and 2 repeat patterns high, plus part-pattern and borders. Cast off row is in **KNIT** stitch.



ODD Row – Right Side Facing	Knit	□ Purl	•
EVEN Row – Wrong Side Facing	Knit	• Purl	□

See Page 3 for Written Instructions (no graph needed)

Rows 11 – 38 (28 rows) inclusive form pattern repeat over multiples of 14 + 1 stitches.

Cast on 49 stitches.

Rows 1 – 5 Knit all stitches

Row 6 K3, Purl to last 3sts, K3

Row 7 (right side) K3, *K1, P4, (K1, P1) twice, K1, P4 ; repeat from * twice, K4

Row 8 K3, P1, *K4, (P1, K1) twice, P1, K4, P1 ; repeat from * twice, K3

Row 9 K3, *K1, P3, (K1, P1) three times, K1, P3 ; repeat from * twice, K4

Row 10 K3, P1, *K3, (P1, K1) three times, P1, K3, P1 ; repeat from * twice, K3

Row 11 K3, *K1, P2, K1, P1, K1, P3, K1, P1, K1, P2 ; repeat from * twice, K4

Row 12 K3, P1, *K2, P1, K1, P1, K3, P1, K1, P1, K2, P1 ; repeat from * twice, K3

Row 13 K3, *K1, P3, (K1, P1) three times, K1, P3 ; repeat from * twice, K4

Row 14 K3, P1, *K3, (P1, K1) three times, P1, K3, P1 ; repeat from * twice, K3

Row 15 K3, *K1, P4, (K1, P1) twice, K1, P4 ; repeat from * twice, K4

Row 16 K3, P1, *K4, (P1, K1) twice, P1, K4, P1 ; repeat from * twice, K3

Row 17 K3, *K1, P5, K1, P1, K1, P5 ; repeat from * twice, K4

Row 18 K3, P1, *K5, P1, K1, P1, K5, P1 ; repeat from * twice, K3

Row 19 K3, *P1, K1, P5, K1, P5, K1 ; repeat from * twice, P1, K3

Row 20 K4, *P1, K5, P1, K5, P1, K1 ; repeat from * twice, K3

Row 21 K3, *K1 P1, K1, P4, K1, P4, K1, P1 ; repeat from * twice, K4

Row 22 K3, P1, *K1, P1, K4, P1, K4, P1, K1, P1 ; repeat from * twice, K3

Row 23 K3, *(P1, K1) twice, P3, K1, P3, K1, P1, K1 ; repeat from * twice, P1, K3

Row 24 K4, *P1, K1, P1, K3, P1, K3, (P1, K1) twice; repeat from * twice, K3

Row 25 K3, *P2, K1, P1, K1, P2, K1, P2, (K1, P1) twice ; repeat from * twice, P1, K3

Row 26 K4, *(K1, P1) twice, K2, P1, K2, P1, K1, P1, K2 ; repeat from * twice, K3

Row 27 K3, *(P1, K1) twice, P3, K1, P3, K1, P1, K1 ; repeat from * twice, P1, K3

Row 28 K4, *P1, K1, P1, K3, P1, K3, (P1, K1) twice, ; repeat from * twice, K3

Row 29 K3, *K1, P1, K1, P4, K1, P4, K1 P1 ; repeat from * twice, K4

Row 30 K3, P1, *K1, P1, K4, P1, K4, P1, K1, P1 ; repeat from * twice, K3

Row 31 K3, *P1, K1, P5, K1, P5, K1 ; repeat from * twice, P1, K3

Row 32 K4, *P1, K5, P1, K5, P1, K1 ; repeat from * twice, K3

Row 33 K3, *K1, P5, K1, P1, K1, P5 ; repeat from * twice, K4

Row 34 K3, P1, *K5, P1, K1, P1, K5, P1 ; repeat from * twice, K3

Row 35 K3, *K1, P4, (K1, P1) twice, K1, P4 ; repeat from * twice, K4

Row 36 K3, P1, *K4, (P1, K1) twice, P1, K4, P1 ; repeat from * twice, K3

Row 37 K3, *K1, P3, (K1, P1) three times, K1, P3 ; repeat from * twice, K4

Row 38 K3, P1, *K3, (P1, K1) three times, P1, K3, P1 ; repeat from * twice, K3

Rows 39 – 66 Repeat Rows 11 – 38 inclusive once

Rows 67 – 72 Repeat Rows 11 – 16 inclusive once

Row 73 Knit all stitches

Rows 74 – 78 Knit (5 rows)

Cast off in **KNIT**

Repeat Pattern