



These instructions include border and repeat pattern. Stitch count is multiples of 14 + 2 (pattern) + 6 (border) stitches and the repeat pattern is over 18 rows. Whole square is 79 rows.

8 ply yarn, size 4mm needles, Finished size approx. 10" (25cm) square. If you

Tension: 5 sts = 1" (2.5cm) – over stocking stitch

Note: If your tension is different – try changing to 4.5mm needles to increase the size or introduce an additional pattern repeat.

Cast on **50 stitches** ($14 \times 3 = 42 + 2 + 6 = 50$). The square will be 3 pattern repeats wide and 4 pattern repeats high (**NB: 4th pattern repeats high stops at Row 16**).

Instructions for Graphs

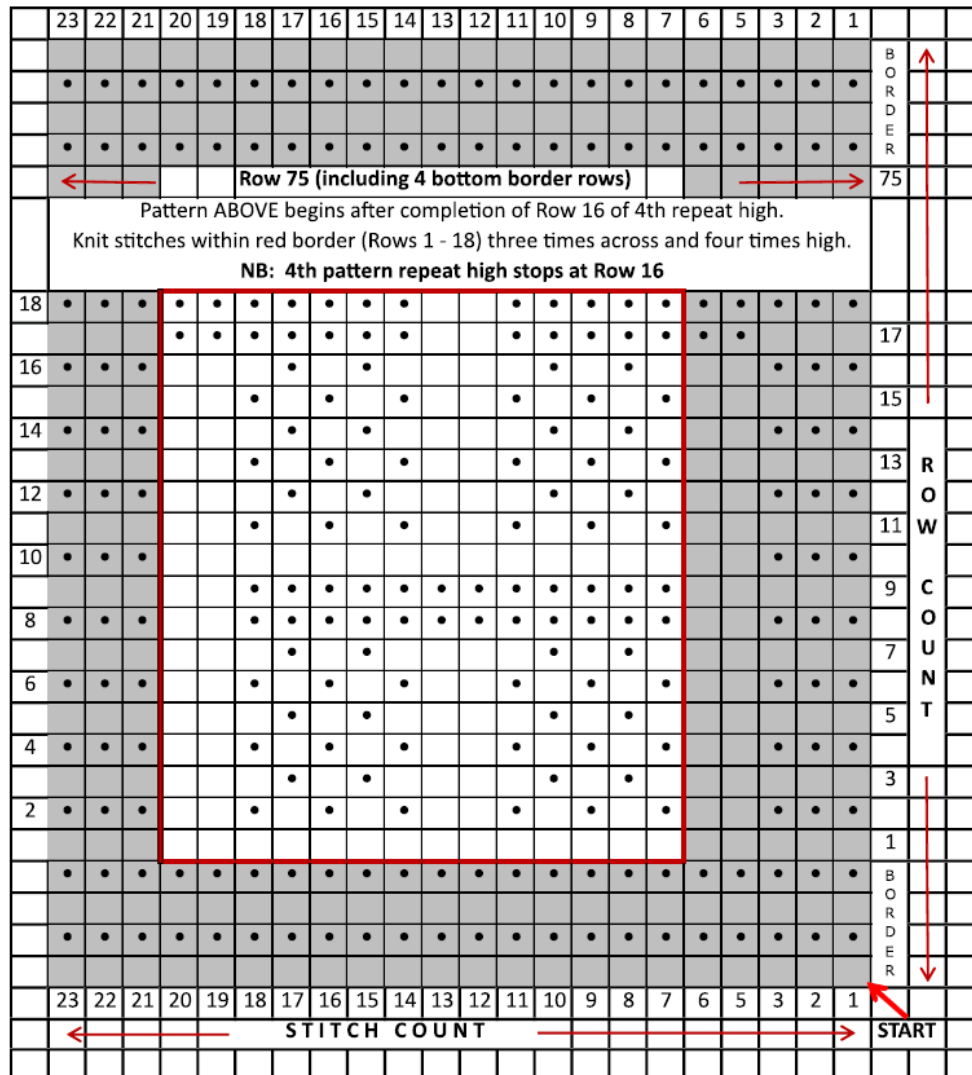
- Each square on the graph represents a stitch.
- The exact repeat pattern is outlined by a heavy coloured border.
- Grey shading indicates stitches/rows outside the repeat pattern.
- The entirety of the graph represents the knitting pattern including borders. **The size of your work depends on how many repeats you create.**

Direction:

- The graph is to be read from the bottom up.
- All odd numbered rows mean right side of work faces knitter. **Read graph from right to left.**
- All even numbered rows mean wrong side of work faces knitter. **Read graph from left to right.**
- Your first stitch is at the bottom right hand corner of the graph (Row 1, Stitch 1).

Stitch Symbols:

To visualise the overall pattern design on the graph please note that the knit stitch is a blank box on **odd** rows and a black dot on **even** rows, while the purl stitch is a black dot on **odd** rows and a blank box on **even** rows.



ODD Row – Right Side Facing	Knit	<input type="checkbox"/>	Purl	<input checked="" type="checkbox"/>
EVEN Row – Wrong Side Facing	Knit	<input checked="" type="checkbox"/>	Purl	<input type="checkbox"/>

See Page 3 for Written Instructions (no graph needed)

Written Instructions (no graph needed)

- **Border** Knit 4 rows
- **Pattern** - Row 1 (right side) – Knit all stitches
- Row 2, 4, 6 K3, P2, *(K1, P1) 3 times, P1 ; repeat from * to last 3 stitches, K3
- Row 3, 5, 7 K6, *P1, K1, P1, K4 ; repeat from * to last 9 stitches, P1, K1, P1, K6
- Row 8 K3, P2, *K12, P2 ; repeat from * to last 3 stitches K3
- Row 9 K5, *P12, K2 ; repeat from * to last 3 stitches, K3
- Row 10 K3, purl to last 3 stitches, K3
- Row 11, 13, 15 K5, *(P1, K1) 3 times, K1 ; repeat from * to last 3 stitches, K3
- Row 12, 14, 16 K3, P3, *K1, P1, K1, P4 ; repeat from * to last 9 stitches, K1, P1, K1, P3, K3
- Row 17, K3, P2, *P5, K2, P7 ; repeat from * to last 3 stitches, K3
- Row 18, K3, *K7, P2, K5 ; repeat from * to last 5 stitches, K5
- Repeat rows 1 – 18 three times then knit rows 1 – 16 once (4th repeat high)
- Row 75 (right side) – Knit all stitches
- **Border** Knit 4 rows then loosely cast off in Purl.

These 18 rows form
repeat pattern