



These instructions include border and repeat pattern. The repeat pattern can be seen clearly as the white area with a red border on the graph. Stitch count is multiples of 10 + 3 (pattern) + 6 (border) stitches and the repeat pattern is over 12 rows (Rows 7 - 18 inclusive). The finished square is 49 stitches by 78 rows.

8 ply yarn, size 4mm needles, Finished size approx. 10" (25.5cm) square.

Tension: 5sts = 1" (2.5cm) – over stocking stitch. If your tension is tighter introduce an extra pattern repeat or change to 4.5mm needles

- **Instructions for Graphs** Each square on the graph represents a stitch.
- The exact repeat pattern is outlined by a heavy red coloured border.
- Light grey shading indicates part-pattern stitches/rows outside the repeat pattern.
- Dark grey shading indicates the all borders.
- The entirety of the graph represents the knitting pattern including borders. **The size of your work depends on how many repeats you create.**

Direction:

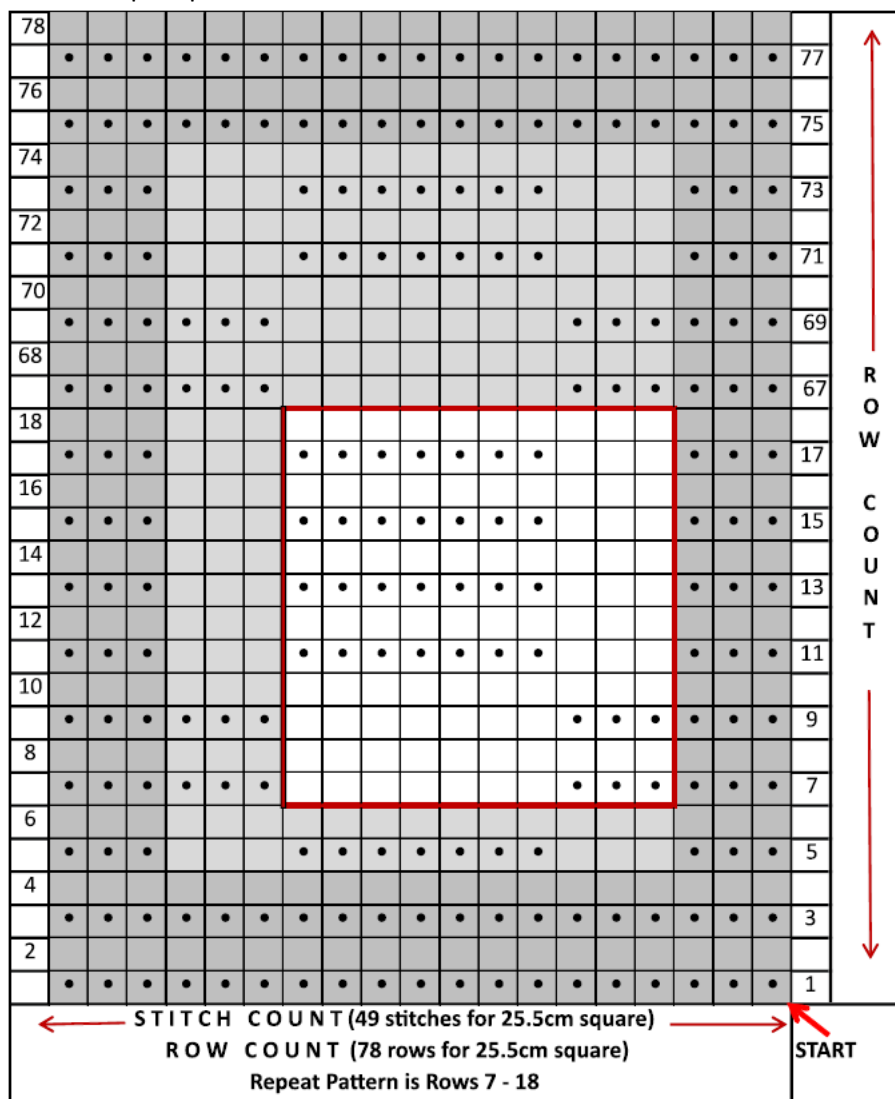
- The graph is to be read from the bottom up.
- All odd numbered rows mean right side of work faces knitter. **Read graph from right to left.**
- All even numbered rows mean wrong side of work faces knitter. **Read graph from left to right.**
- Your first stitch is at the bottom right-hand corner of the graph (Row 1, Stitch 1).

BLOCK STITCH

Stitch Symbols:

- To visualise the overall pattern design on the graph please note that the;
- ☐ knit stitch is a blank box on **odd** rows and a black dot on **even** rows, while the
- ● purl stitch is a black dot on **odd** rows and a blank box on **even** rows.

Cast on **49 stitches** ($10 \times 4 = 40 + 3 + 6 = 49$). The area outlined by a heavy red border represents the repeat pattern. The 10" (25.5cm) square is 4 repeat patterns wide and 5 repeat patterns high, plus part-pattern and borders. Cast off row is in **KNIT** stitch.



ODD Row – Right Side Facing	Knit	☐	Purl	●
EVEN Row – Wrong Side Facing	Knit	●	Purl	☐

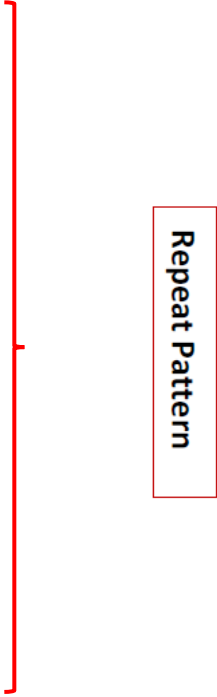
See Page 3 for Written Instructions (no graph needed)

Rows 7 - 18 (12 rows) inclusive form pattern repeat over multiples of 10 + 3 stitches.

The 10" (25.5cm) square is 4 repeat patterns wide and 5 repeat patterns high, plus part-pattern and borders. Cast off row is in **KNIT** stitch.

Cast on 49 stitches.

Rows 1 – 4	Purl all stitches
Row 5	P3, *K3, P7; repeat from * 3 times, K3, P3
Row 6	Purl all stitches
Row 7	P3, *P3, K7; repeat from * 3 times, P6
Row 8	Purl all stitches
Row 9	P3, *P3, K7; repeat from * 3 times, P6
Row 10	Purl all stitches
Row 11	P3, *K3, P7; repeat from * 3 times, K3, P3
Row 12	Purl all stitches
Row 13	P3, *K3, P7; repeat from * 3 times, K3, P3
Row 14	Purl all stitches
Row 15	P3, *K3, P7; repeat from * 3 times, K3, P3
Row 16	Purl all stitches
Row 17	P3, *K3, P7; repeat from * 3 times, K3, P3
Row 18	Purl all stitches
Rows 19 – 66	Repeat Rows 7 - 18 inclusive four times
Rows 67 – 74	Repeat Rows 7 - 14 inclusive once
Row 75 - 78	Purl all stitches



Repeat Pattern