



These instructions include border and repeat pattern. The repeat pattern can be seen clearly as the white area with a red border on the graph. Stitch count is multiples of 18 + 9 (pattern) + 6 (border) stitches and the repeat pattern is over 36 rows (Rows 13 - 48 inclusive). The finished square is 51 stitches by 78 rows.

8 ply yarn, size 4mm needles, Finished size approx. 10" (25.5cm) square.

Tension: 5sts = 1" (2.5cm) – over stocking stitch. If your tension is tighter introduce an extra pattern repeat or change to 4.5mm needles

- **Instructions for Graphs** Each square on the graph represents a stitch.
- The exact repeat pattern is outlined by a heavy red coloured border.
- Light grey shading indicates part-pattern stitches/rows outside the repeat pattern.
- Dark grey shading indicates the all borders.
- The entirety of the graph represents the knitting pattern including borders. **The size of your work depends on how many repeats you create.**

Direction:

- The graph is to be read from the bottom up.
- All odd numbered rows mean right side of work faces knitter. **Read graph from right to left.**
- All even numbered rows mean wrong side of work faces knitter. **Read graph from left to right.**
- Your first stitch is at the bottom right-hand corner of the graph (Row 1, Stitch 1).

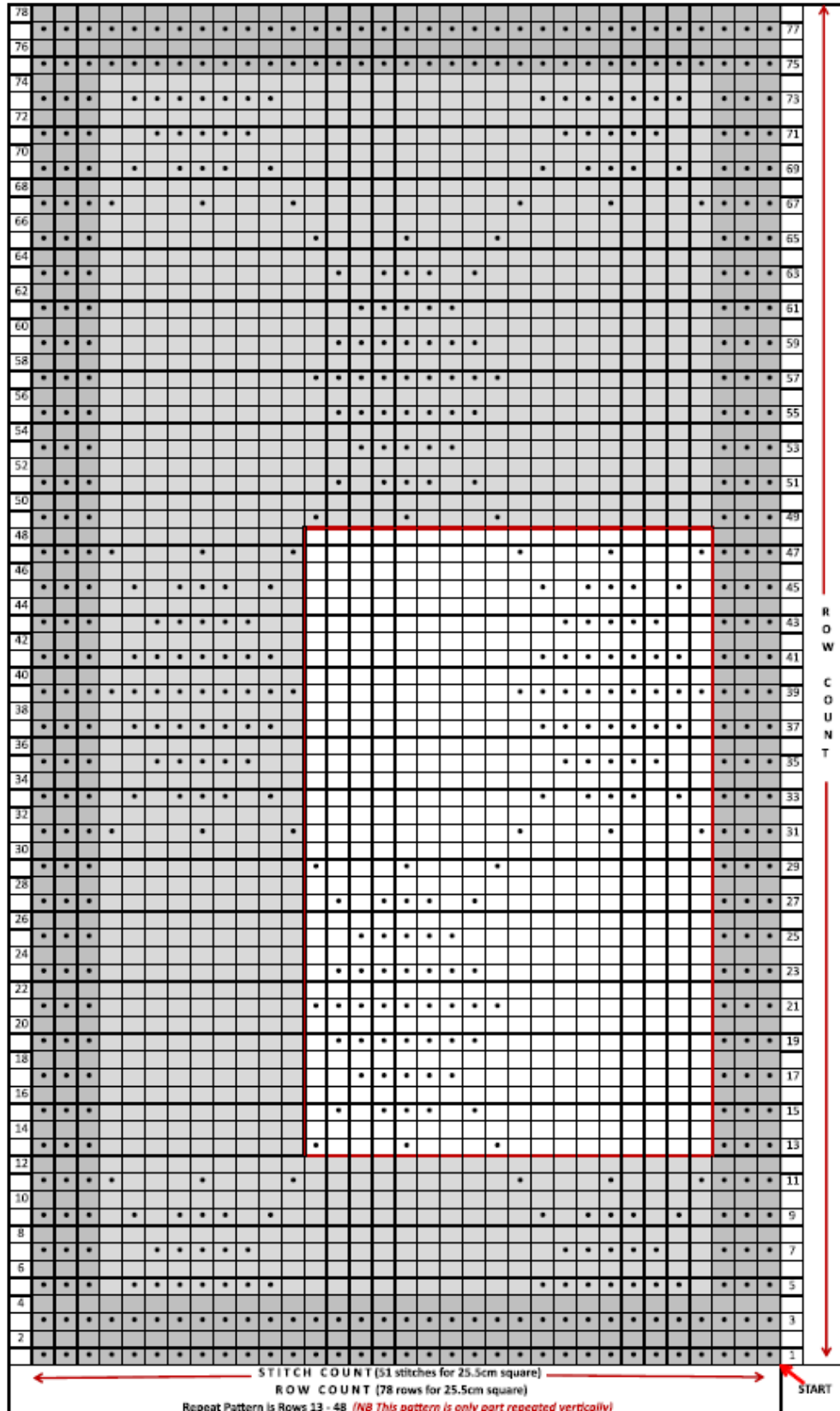
Stitch Symbols:

- To visualise the overall pattern design on the graph please note that the;
- knit stitch is a blank box on **odd** rows and a black dot on **even** rows, while the
- purl stitch is a black dot on **odd** rows and a blank box on **even** rows.

ARGYLE STITCH

GRAPH INSTRUCTIONS – Argyle Stitch

Cast on **51 stitches** ($18 \times 2 = 36 + 9 + 6 = 51$). The area outlined by a heavy red border represents the repeat pattern. The 10" (25.5cm) square is 2 repeat patterns wide and 1 pattern high, plus part-pattern and borders. Cast off row is in **KNIT** stitch.



Rows 13 - 48 (36 rows) inclusive form pattern repeat over multiples of 18 + 9 stitches

The 10" (25.5cm) square is 2 repeat patterns wide and 1 pattern high, plus part-pattern and borders.
Cast off row is in **KNIT** stitch.

Cast on **51** stitches.

Rows 1 – 4 Purl all stitches

Row 5 P3, *K1, P7, K10 ; repeat from * once, K1, P7, K1, P3

Row 6 Purl all stitches

Row 7 P3, *K2, P5, K11 ; repeat from * once, K2, P5, K2, P3

Row 8 Purl all stitches

Row 9 P3, *K1, P1, K1, P3, K1, P1, K10 ; repeat from * once, (K1, P1, K1, P3) twice

Row 10 Purl all stitches

Row 11 P3, *(P1, K3) twice, P1, K9 ; repeat from * once, (P1, K3) twice, P4

Row 12 Purl all stitches

Row 13 P3, *K9, (P1, K3) twice, P1 ; repeat from * once, K9, P3

Row 14 and all following **EVEN** rows – Purl all stitches

Row 15 P3, *K10, P1, K1, P3, K1, P1, K1 ; repeat from * once, K9, P3

Row 17 P3, *K11, P5, K2 ; repeat from * once, K9, P3

Row 19 P3, *K10, P7, K1 ; repeat from * once, K9, P3

Row 21 P3, *K9, P9 ; repeat from * once, K9, P3

Row 23 P3, *K10, P7, K1 ; repeat from * once, K9, P3

Row 25 P3, *K11, P5, K2 ; repeat from * once, K9, P3

Row 27 P3, *K10, P1, K1, P3, K1, P1, K1 ; repeat from * once, K9, P3

Row 29 P3, *K9, (P1, K3) twice, P1 ; repeat from * once, K9, P3

Row 31 P3, *(P1, K3) twice, P1, K9 ; repeat from * once, (P1, K3) twice, P4

Row 33 P3, *K1, P1, K1, P3, K1, P1, K10 ; repeat from * once, (K1, P1, K1, P3) twice

Row 35 P3, *K2, P5, K11 ; repeat from * once, K2, P5, K2, P3

Row 37 P3, *K1, P7, K10 ; repeat from * once, K1, P7, K1, P3

Row 39 P3, *P9, K9 ; repeat from * once, P12

Row 41 P3, *K1, P7, K10 ; repeat from * once, K1, P7, K1, P3

Row 43 P3, *K2, P5, K11 ; repeat from * once, K2, P5, K2, P3

Row 45 P3, *K1, P1, K1, P3, K1, P1, K10 ; repeat from * once, (K1, P1, K1, P3) twice

Row 47 P3, *(P1, K3) twice, P1, K9 ; repeat from * once, (P1, K3) twice, P4

Row 48 Purl all stitches

Rows 49 – 73 Repeat Rows 13 - 37 inclusive once (25 rows)

Row 74 - 78 Purl all stitches (5 rows)

Cast off in **KNIT**

Repeat Pattern