



*These instructions include border and repeat pattern. Stitch count is multiples of 8 + 1 (pattern) + 6 (border) stitches and the repeat pattern is over 8 rows.*

8 ply yarn, size 4mm needles, Finished size approx. 10.5" (26.5cm) square

Tension: 5sts = 1" (2.5cm) – over stocking stitch

#### Instructions for Graphs

- Each square on the graph represents a stitch.
- The exact repeat pattern is outlined by a heavy coloured border.
- Grey shading indicates stitches/rows outside the repeat pattern.
- The entirety of the graph represents the knitting pattern including borders. **The size of your work depends on how many repeats you create.**

#### Direction:

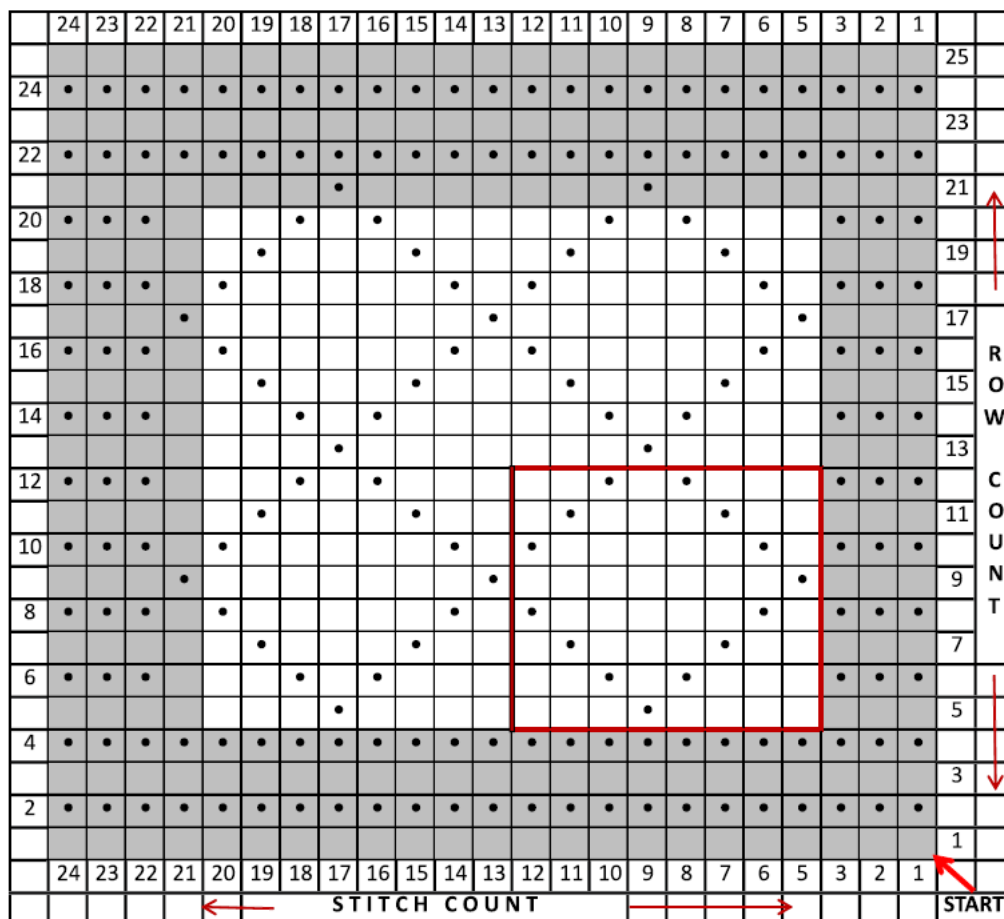
- The graph is to be read from the bottom up.
- All odd numbered rows mean right side of work faces knitter. **Read graph from right to left.**
- All even numbered rows mean wrong side of work faces knitter. **Read graph from left to right.**
- Your first stitch is at the bottom right-hand corner of the graph (Row 1, Stitch 1).

## DIAMOND SEED SQUARE

### Stitch Symbols:

To visualise the overall pattern design on the graph please note that the knit stitch is a blank box on **odd** rows and a black dot on **even** rows, while the purl stitch is a black dot on **odd** rows and a blank box on **even** rows.

Cast on **55 stitches** ( $6 \times 8 = 48 + 1 + 6 = 55$ ). The area outlined by a heavy red border represents the repeat pattern. The square will be 6 diamonds wide



ODD Row – Right Side Facing

Knit



Purl



EVEN Row – Wrong Side Facing

Knit



Purl



See Page 3 for Written Instructions (no graph needed)

**Written Instructions (no graph needed)**

Rows 1 – 4 Knit stitch – this forms border

Row 5 (right side) K3, (K4, P1, K3), K4

Row 6 K3, P1, (P2, K1, P1, K1, P3), K3

Row 7 K3, (K2, P1, K3, P1, K1), K4

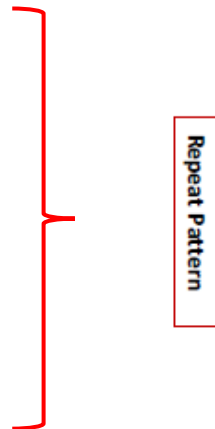
Row 8 K3, P1 (K1, P5, K1, P1), K3

Row 9 K3, (P1, K7), P1, K3

Row 10 K3, P1, (K1, P5, K1, P1), K3

Row 11 K3, (K2, P1, K3, P1, K1), K4

Row 12 K3, P1, (P2, K1, P1, K1, P3), K3



Repeat rows 5 to 12 until square measures about 9 ½" (24cm) from cast on edge finishing on a Row 12. Then end pattern by knitting Row 5 once - (right side) K3, (K4, P1, K3) K4

End square by knitting 4 rows (Knit stitch) to form border

Cast off