



These instructions include border and repeat pattern. Stitch count is multiples of 14 + 2 (pattern) + 6 (border) stitches and the repeat pattern is over 12 rows (Rows 15 - 26 inclusive). The finished square is 50 stitches by 78 rows.

8 ply yarn (approx. 35g), size 4mm needles, Finished size approx. 10" (25.5cm) square.

Tension: 5sts = 1" (2.5cm) – over stocking stitch

Instructions for Graphs

- Each square on the graph represents a stitch.
- The exact repeat pattern is outlined by a heavy red coloured border.
- Light grey shading indicates part-pattern stitches/rows outside the repeat pattern.
- Dark grey shading indicates all the borders.
- The entirety of the graph represents the knitting pattern (**minus repeats**) and includes borders.

Direction:

- The graph is to be read from the bottom up.
- All odd numbered rows mean right side of work faces knitter. **Read graph from right to left.**
- All even numbered rows mean wrong side of work faces knitter. **Read graph from left to right.**
- Your first stitch is at the bottom right-hand corner of the graph (Row 1, Stitch 1).

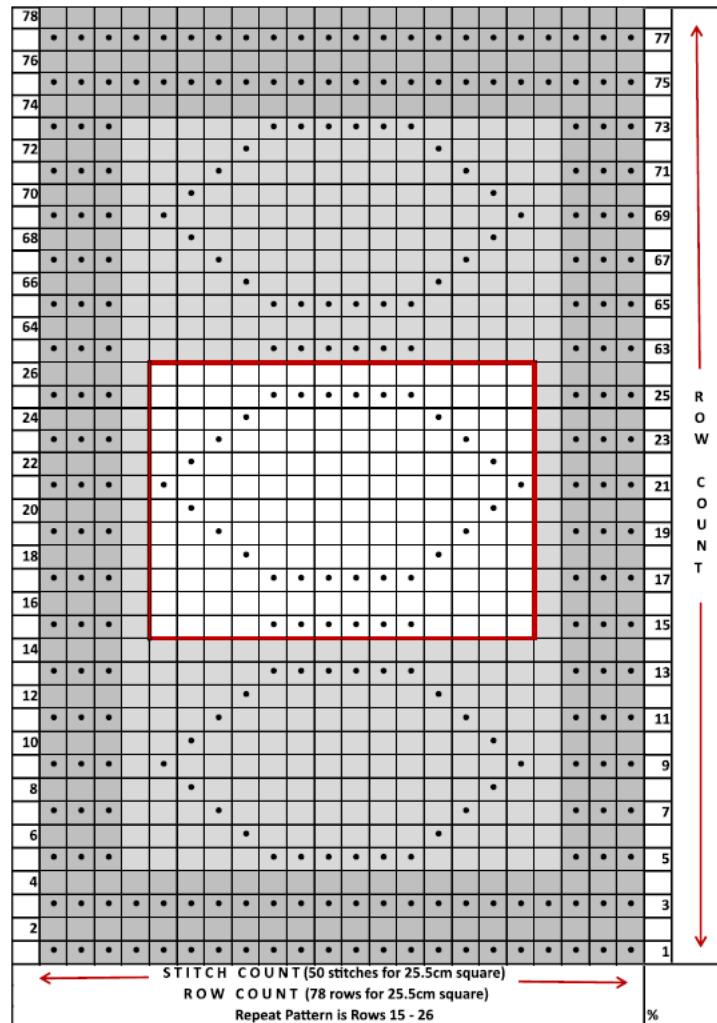
Stitch Symbols:

To visualise the overall pattern design on the graph please note that the;

- knit stitch is a blank box on **odd** rows and a black dot on **even** rows, while the
- purl stitch is a black dot on **odd** rows and a blank box on **even** rows.

GRAPH INSTRUCTIONS – Hexagons and Blocks

Cast on **50 stitches** ($14 \times 3 = 42 + 2 + 6 = 50$). The area outlined by a heavy red border represents the repeat pattern. The 10" (25.5cm) square is **3 patterns wide** and **6 patterns high** (including part-patterns top and bottom) and borders. Cast off row is in **PURL** stitch.



ODD Row – Right Side Facing	Knit	<input type="checkbox"/>	Purl	<input checked="" type="checkbox"/>
EVEN Row – Wrong Side Facing	Knit	<input checked="" type="checkbox"/>	Purl	<input type="checkbox"/>

See Page 3 for Written Instructions (no graph needed)

Rows 15 - 26 (12 rows) inclusive form pattern repeat over multiples of 14 + 2 stitches.

Hexagons and Blocks

The 10" (25.5cm) square is 3 patterns wide and 6 patterns high (including part-patterns top and bottom) and borders. Cast off row is in **PURL** stitch.

Cast on 50 stitches.

Rows 1 – 4 Purl all stitches

Row 5 P3, K1, *K4, P6, K4 ; repeat from * twice, K1, P3

Row 6 P4, *P3, K1, P6, K1, P3 ; repeat from * twice, P4

Row 7 P3, K1, *K2, P1, K8, P1, K2 ; repeat from * twice, K1, P3

Row 8 P4, *P1, K1, P10, K1, P1 ; repeat from * twice, P4

Row 9 P3, K1 *P1, K12, P1, ; repeat from * twice, K1, P3

Row 10 P4, *P1, K1, P10, K1, P1 ; repeat from * twice, P4

Row 11 P3, K1, *K2, P1, K8, P1, K2 ; repeat from * twice, K1, P3

Row 12 P4, *P3, K1, P6, K1, P3 ; repeat from * twice, P4

Row 13 P3, K1, *K4, P6, K4 ; repeat from * twice, K1, P3

Row 14 Purl all stitches

Row 15 P3, K1, *K4, P6, K4 ; repeat from * twice, K1, P3

Row 16 Purl all stitches

Row 17 P3, K1, *K4, P6, K4 ; repeat from * twice, K1, P3

Row 18 P4, *P3, K1, P6, K1, P3 ; repeat from * twice, P4

Row 19 P3, K1, *K2, P1, K8, P1, K2 ; repeat from * twice, K1, P3

Row 20 P4, *P1, K1, P10, K1, P1 ; repeat from * twice, P4

Row 21 P3, K1 *P1, K12, P1, ; repeat from * twice, K1, P3

Row 22 P4, *P1, K1, P10, K1, P1 ; repeat from * twice, P4

Row 23 P3, K1, *K2, P1, K8, P1, K2 ; repeat from * twice, K1, P3

Row 24 P4, *P3, K1, P6, K1, P3 ; repeat from * twice, P4

Row 25 P3, K1, *K4, P6, K4 ; repeat from * twice, K1, P3

Row 26 Purl all stitches

Rows 27 – 62 Repeat Rows 15 – 26 **THREE** times (36 rows)

Rows 63 - 73 Repeat Rows 15 – 25 (11 rows)

Rows 74 - 78 Purl all stitches (5 rows)

Cast off in **PURL** stitch

